

Checking in on the Social Security and Medicare Trust Funds

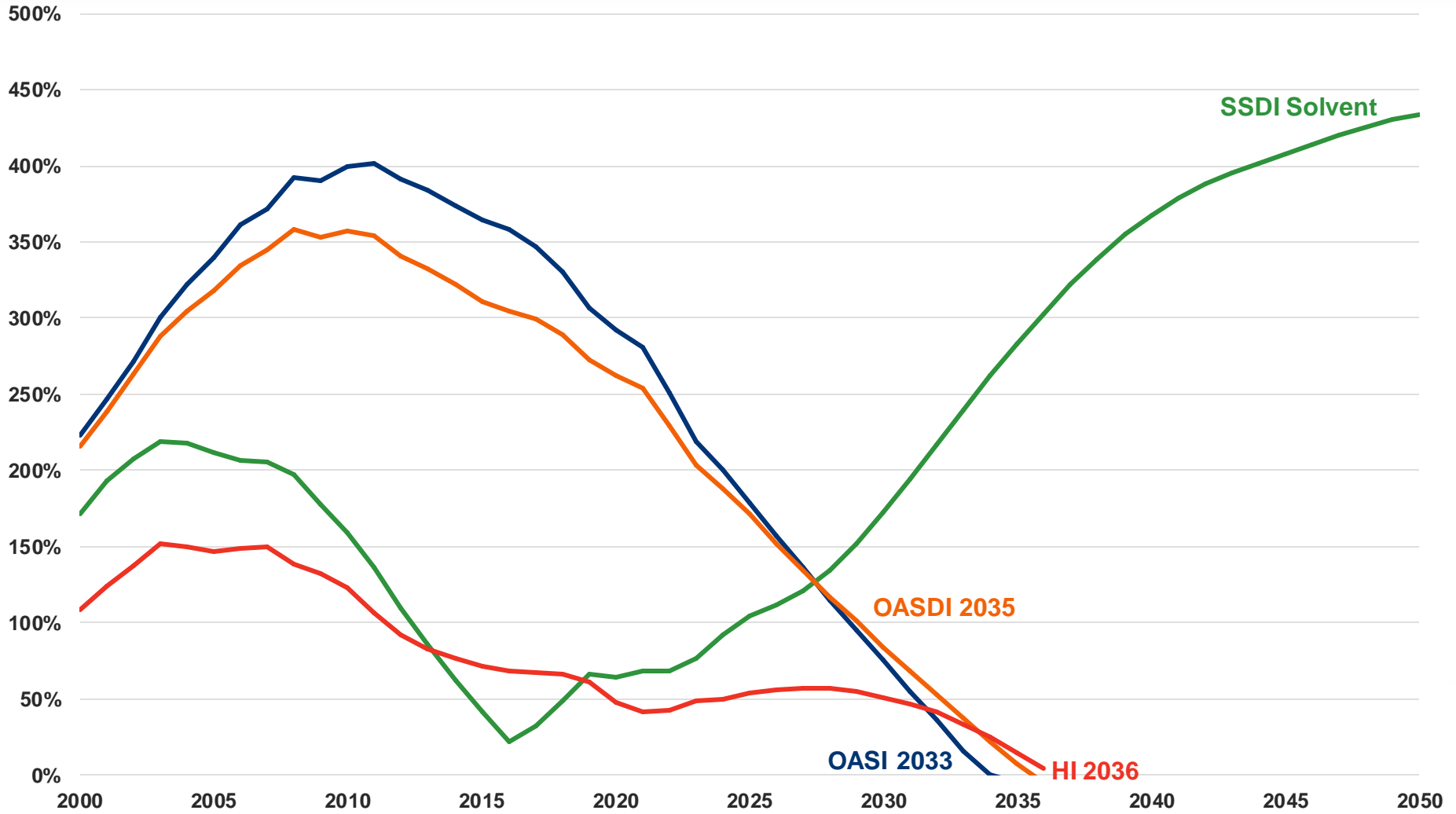
May 7, 2024



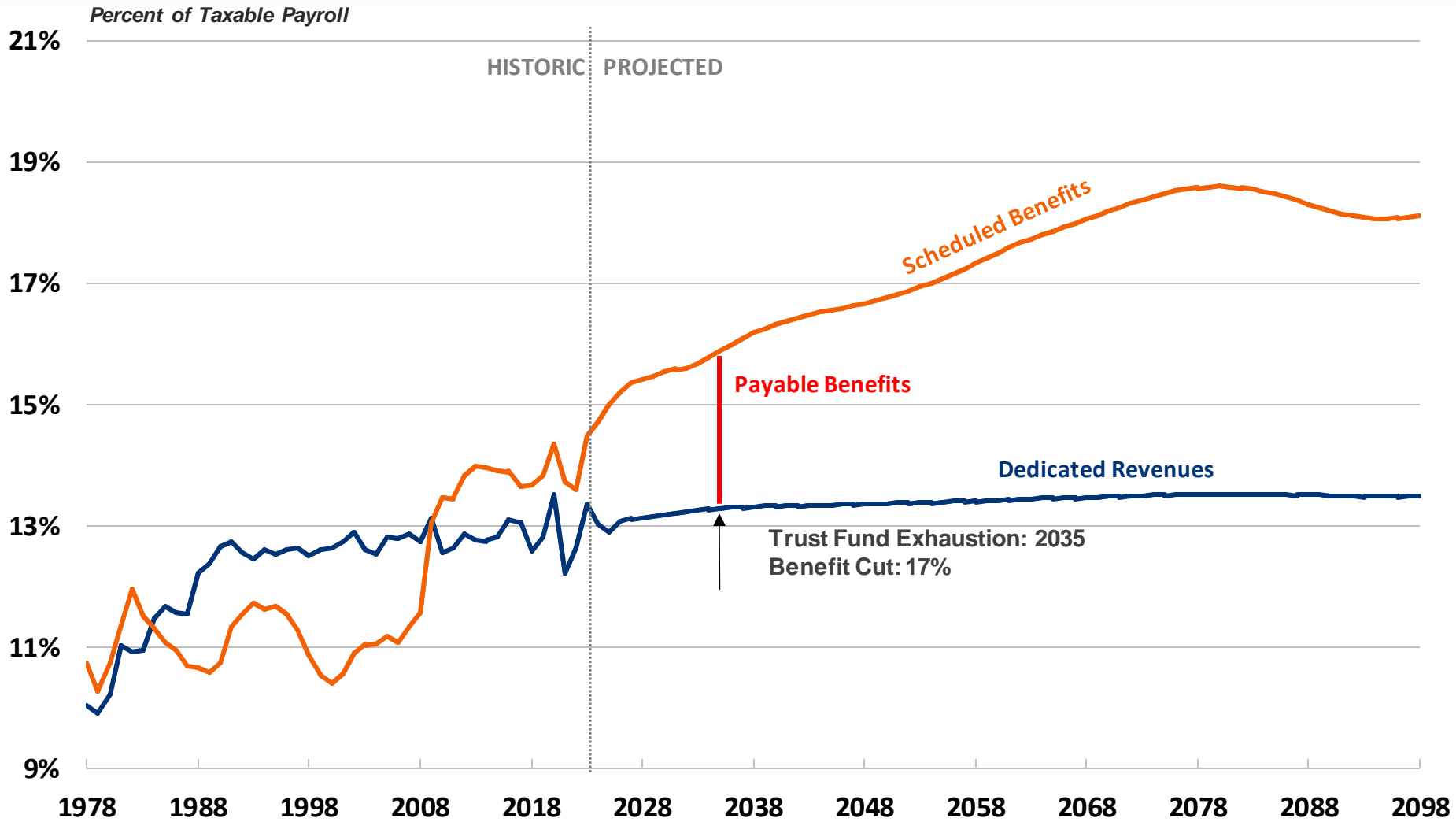
**COMMITTEE FOR A
RESPONSIBLE FEDERAL BUDGET**

CRFB.org

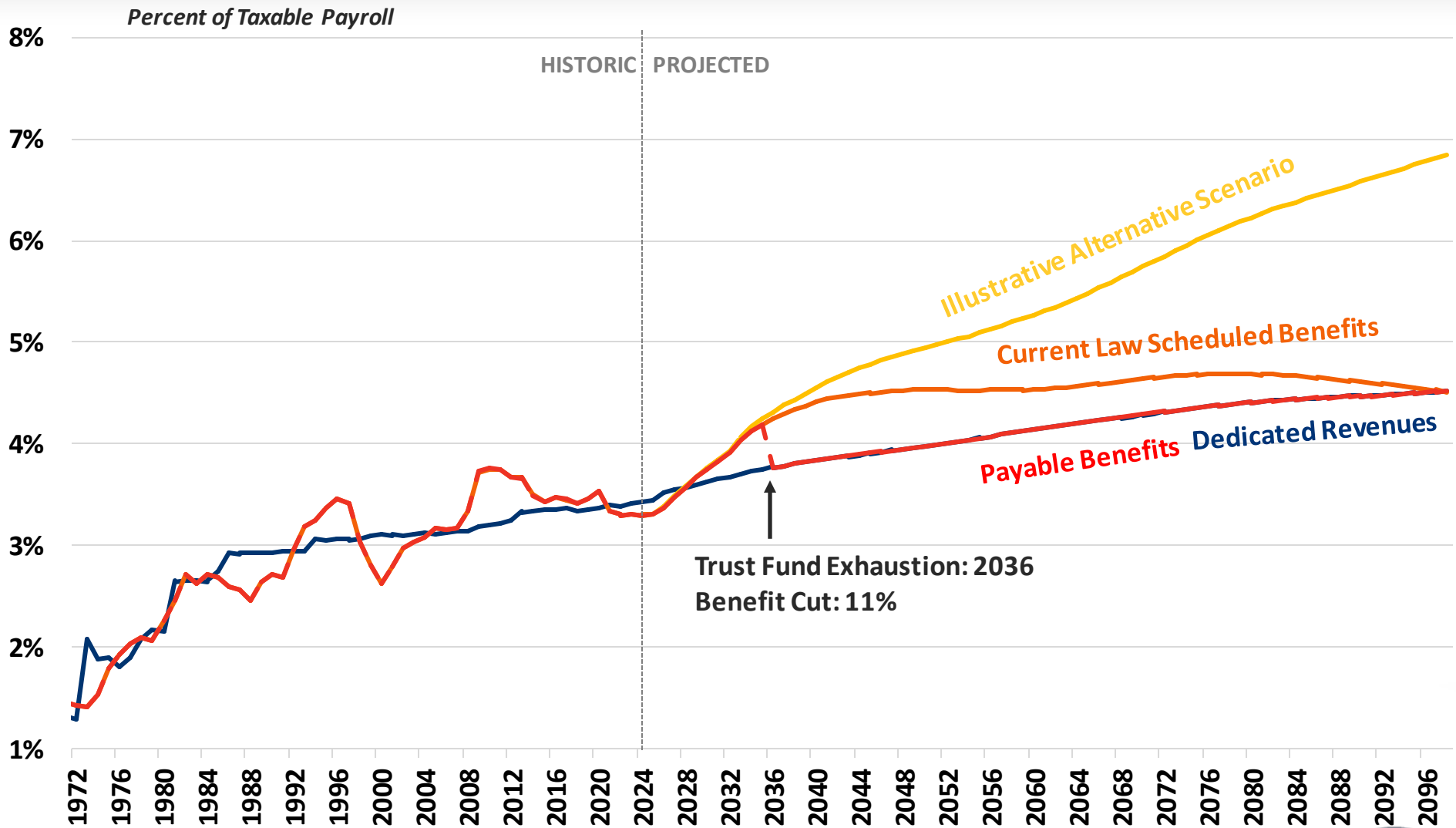
Social Security & Medicare Face Looming Insolvency



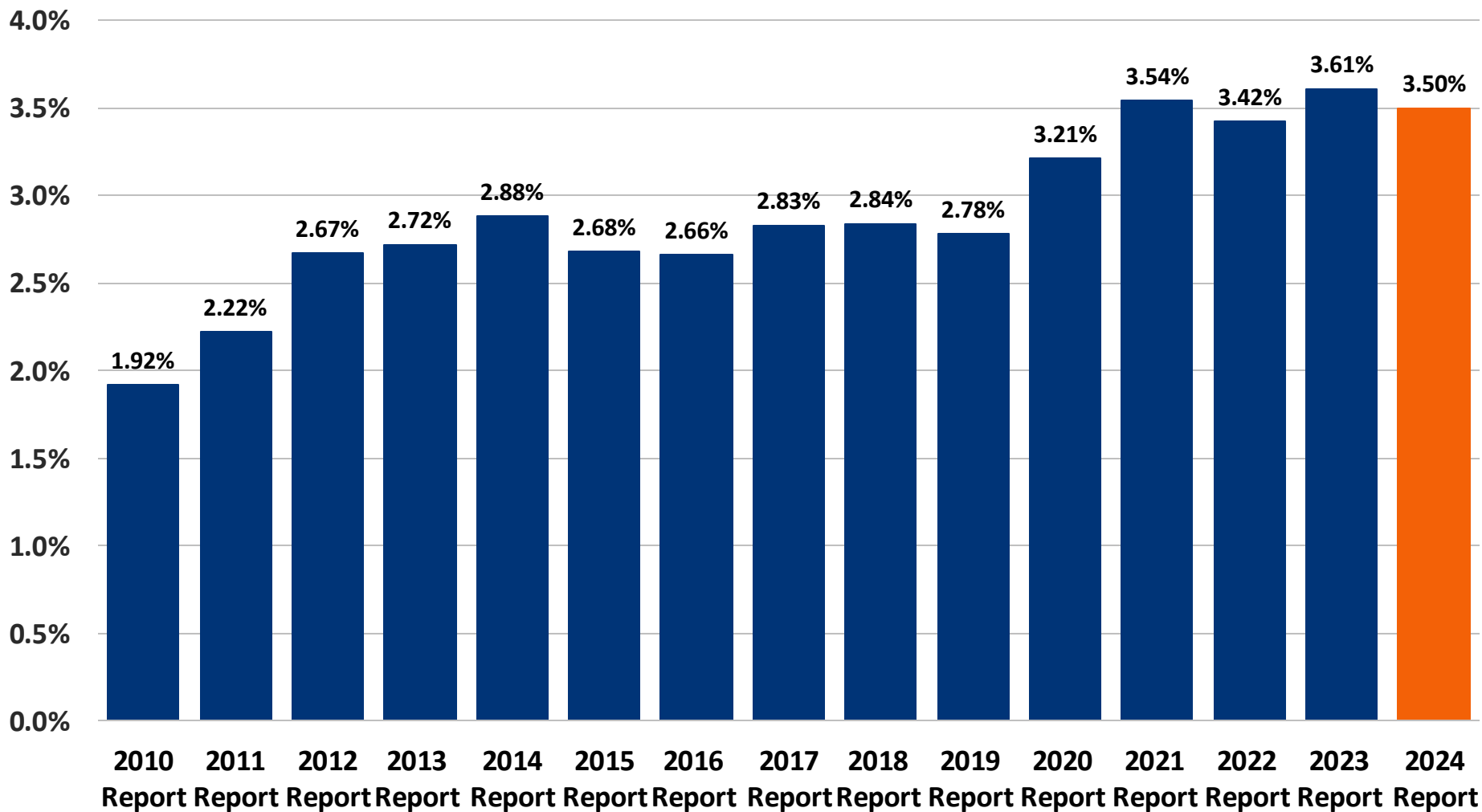
And Growing Imbalances



And Growing Imbalances

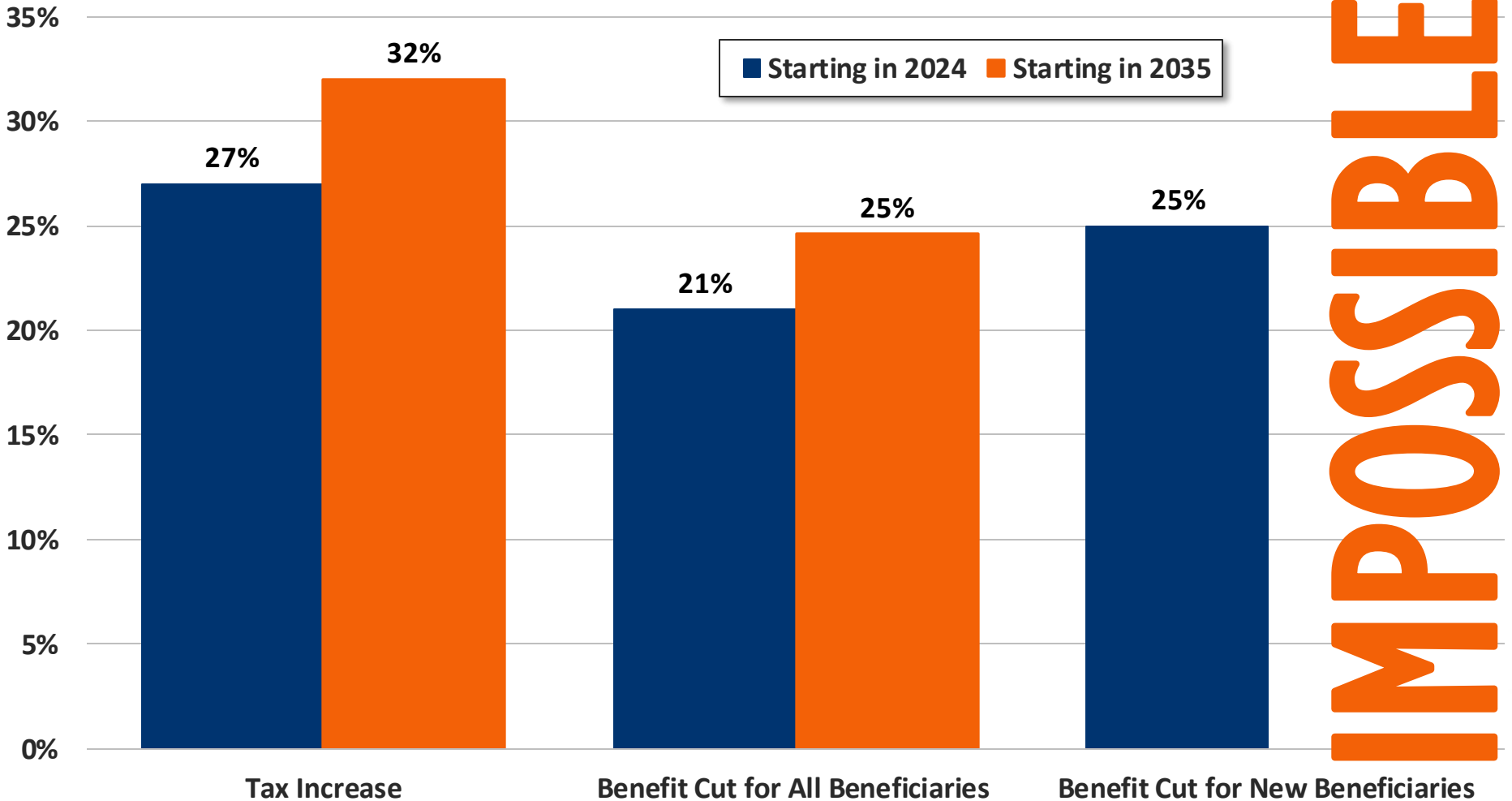


Social Security Faces a 3.5% of Payroll Shortfall



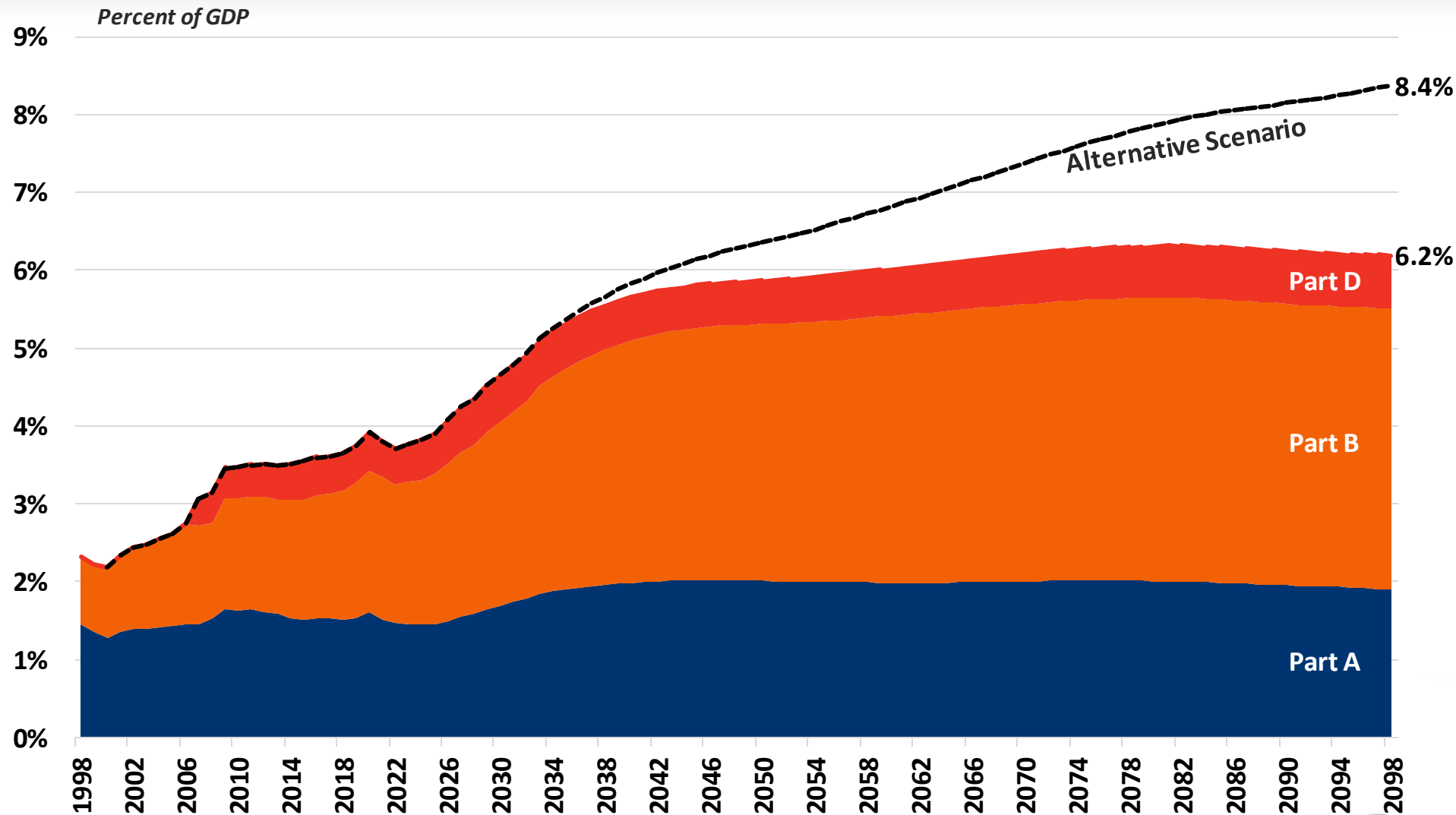
Restoring Solvency Requires Major Adjustments

Percent Change Necessary to Maintain 75-Year Solvency

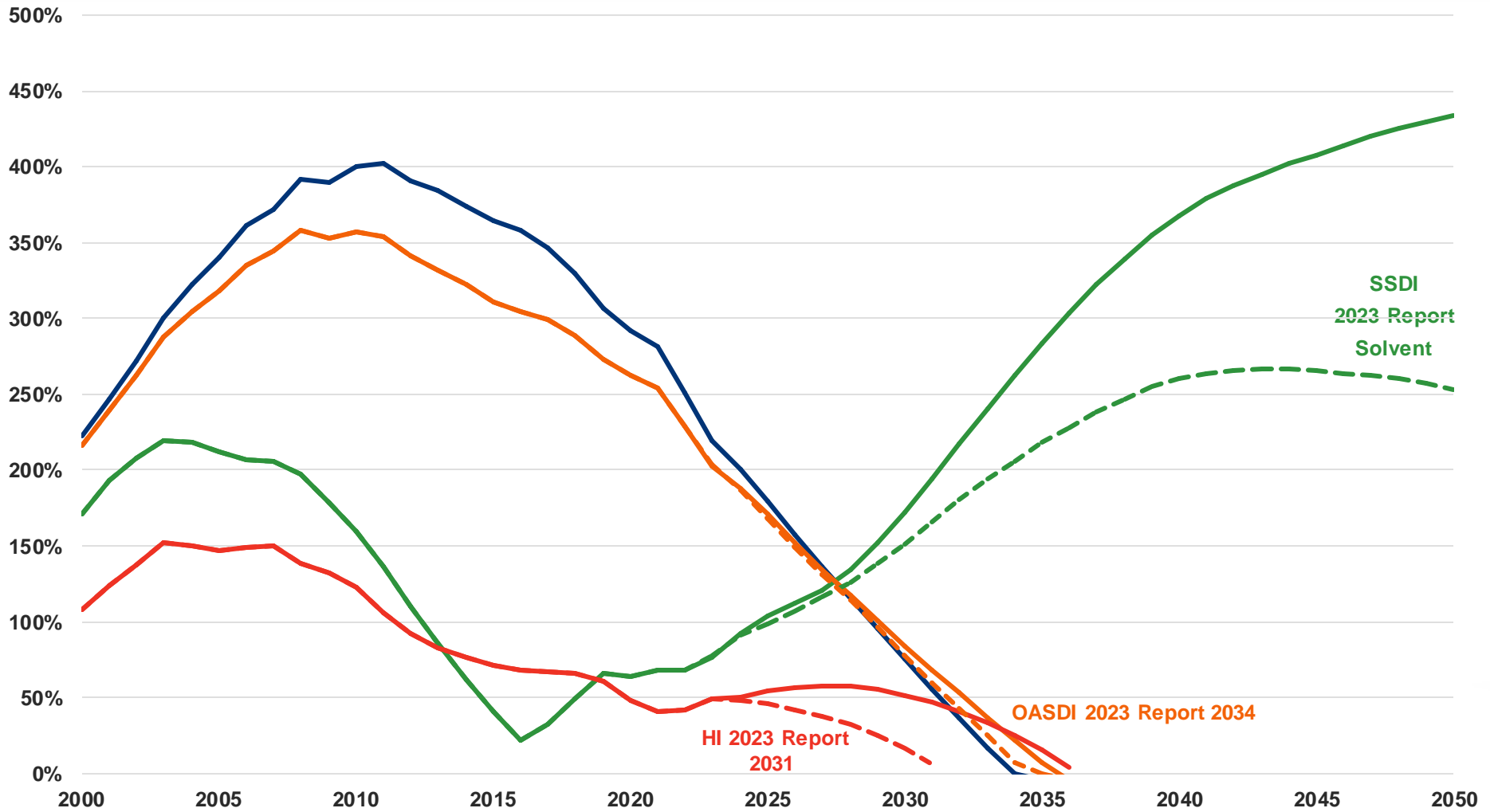


IMPOSSIBLE

Medicare Costs are Rising Faster than the Economy



Modest Improvements Don't Change the Story



Time Is Running Out for Trust Fund Solutions

HIGHWAY INSOLVENCY COUNTDOWN

The Highway system will be forced to start cutting benefits by 2028. [What can we do?](#)

YEARS MONTHS DAYS HOURS MINUTES SECONDS
04:01:24:01:40:40



Committee for a Responsible Federal Budget

MEDICARE INSOLVENCY COUNTDOWN

The Medicare system will be forced to start cutting benefits by 2036. [What can we do?](#)

YEARS MONTHS DAYS HOURS MINUTES SECONDS
11:07:25:00:39:56



Committee for a Responsible Federal Budget

SOCIAL SECURITY COUNTDOWN

The Social Security system will be forced to start cutting benefits by 2035. [What can we do?](#)

YEARS MONTHS DAYS HOURS MINUTES SECONDS
10:08:25:00:39:18



Committee for a Responsible Federal Budget

